

The Nutshell, River Road

Maidenhead • Berkshire • SL6 0BB

Offers In Excess Of: £395,000



coopers
est 1986

The Nutshell, River Road

Maidenhead • Berkshire • SL6 0BB

Immaculately presented and spacious two bedroom two bathroom top floor apartment with views over the River Thames. Ideal lock-up-and-leave property with great investment potential in a sought after small private setting of just 6 private apartments overlooking the River Thames.

Riverside views

Communal gardens

Allocated parking space

Quiet location

Lift access

Phone entry system

Sought after private road

Direct railway links to central London

Easy access to Maidenhead town centre

En-suite to master

These particulars are intended as a guide and must not be relied upon as statements of fact. Your attention is drawn to the Important Notice on the last page.





Comprising of spacious lounge with views over the River Thames, separate fitted kitchen/ breakfast room with further views over the River, two double bedrooms, family bathroom, en-suite to master bedroom and several storage cupboards. The property benefits from an allocated parking space, ample cycle storage, lift and communal gardens.

The property benefits from being managed directly by the owners of the 6 apartments allowing full control of the service charges.

The Nutshell is located on a private road on the River Thames with great access to the countryside, riverside walks, rowing club as well as exclusive bistros and riverside pubs. Easy access to Taplow and Maidenhead train stations (GWR and Elizabeth Line) with fast connections into central London in less than 20 mins. Walking distance to Waitrose and all the amenities of Maidenhead Town centre.





Schools:

Forest Bridge School 0.4 miles
RBWM Alternative Learning Provision 0.5 miles



Train:

Taplow Station 0.8 miles
Maidenhead Station 1.0 miles
Furze Platt Station 1.4 miles



Car:

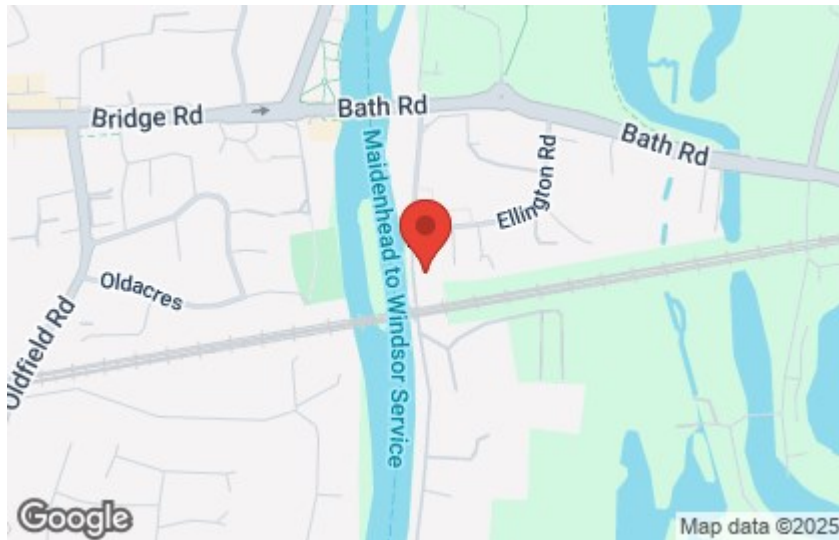
M4, A40, M25, M40



Council Tax Band:

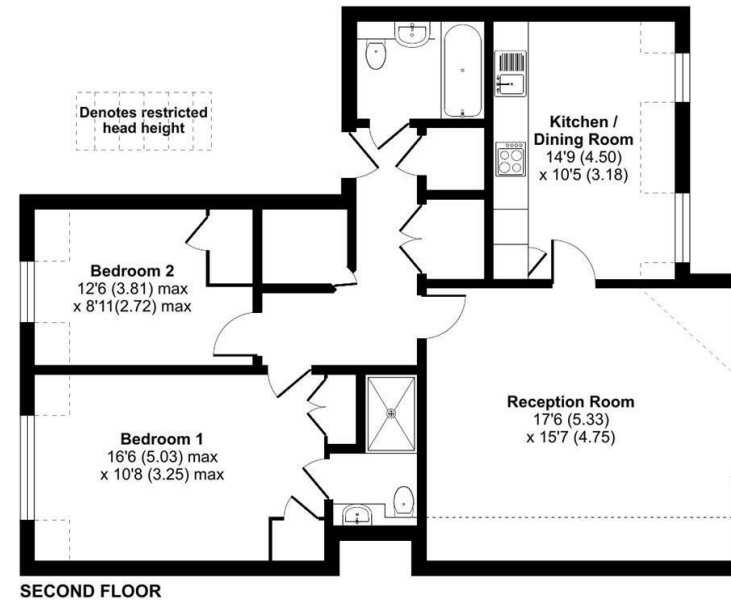
E

(Distances are straight line measurements from centre of postcode)



River Road, Taplow, Maidenhead, SL6

Approximate Area = 877 sq ft / 81.4 sq m
Limited Use Area(s) = 94 sq ft / 8.7 sq m
Total = 971 sq ft / 90.1 sq m
For identification only - Not to scale



Floor plan produced in accordance with RICS Property Measurement Standards incorporating International Property Measurement Standards (IPMS2 Residential). © nichecom 2023. Produced for Coopers. REF: 982207

coopers
est 1986

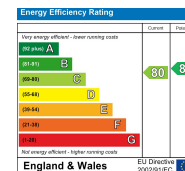
coopers
est 1986

01628 232 550

42 Queen Street, Maidenhead,
, SL6 1HZ

maidenhead@coopersresidential.co.uk

CoopersResidential.co.uk



Important Notice: These particulars, whilst believed to be accurate are set out as a general outline only for guidance and do not constitute any part of an offer or contract. Intending purchasers should not rely on them as statements or representation of fact, but must satisfy themselves by inspection or otherwise has the authority to make or give any representation or warranty in respect of the property.